

**Gebr. Märklin & Cie. GmbH**

Stuttgarter Strasse 55-57  
D-73033 Göppingen

Telefon +49 (0) 7161/6 08-0  
Telefax +49 (0) 7161/608-360

Göppingen, May 14, 2014

Dear Madam/Sir:

The new update to Version 3.6.0 for the 60213 to 60215 Central Stations will be available shortly. This new software version represents an important step with regard to future updates. We therefore want to inform you in the following newsletter about these implications.

One of the characteristics most appreciated by our customers about the current generation of Central Stations is the constant stream of updates being offered that can be used to install supplements and additional possibilities into the Central Stations. In the past, these updates went out to the customers without explanations and without possibilities explained for impact on the operation of trains. The new behavior by the Central Station resulting from these updates could lead to irritation on the part of the customers and malfunction of the controller.

We have therefore decided to change completely the process for the update and to combine it with a manageable menu guide. This new update 3.6.0 must be carried out so that this type of update is capable of running in the future on the 60213 to 60215 Central Station. The procedure for this differs from earlier procedures. We therefore request that you do not engage in any experiments and that you adhere strictly to the following steps.

You need a USB stick for this update and it must have a memory capacity of 8 GB. For the sake of safety store existing important data on it and if necessary on a suitable device (example: personal computer).

Go to the Märklin Web page under

[http://www.maerklin.de/de/produkte/tools\\_downloads/software\\_updates.html](http://www.maerklin.de/de/produkte/tools_downloads/software_updates.html)

and load the following files from the Web page into the main directory on this USB stick:

cs2update.tgz  
cs2update.img

Important: Please download these files first when there is a note on the Web page about this new update. Older versions of these files naturally do not generate the following procedure.

Tip: Plug the USB stick into an available USB socket on your personal computer for this transfer. The personal computer must be connected to the Internet. Go to the Web page mentioned above. Position the cursor on the desired file and press the right mouse button. A selection menu will open up in which you will select the sub-item "Save as ...". In the new "Save" window that now opens up select the USB stick as the save location and activate this selection. Carry out this procedure for both files, one after the other.

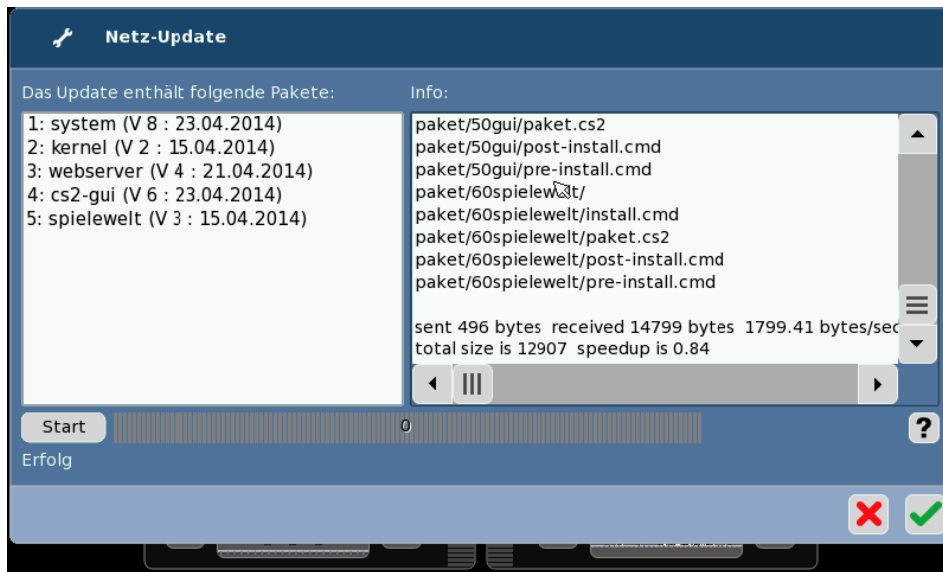
Now plug this USB stick into the USB socket on the 60213 – 60215 Central Station that is ready for operation. Select the menu "Setup" there and the button "Update program". After the update, the Central Station will be started again and will activate the new update process.

**Important: A Central Station can also continue to be brought to the latest level of software with future updates by means of your data network.**

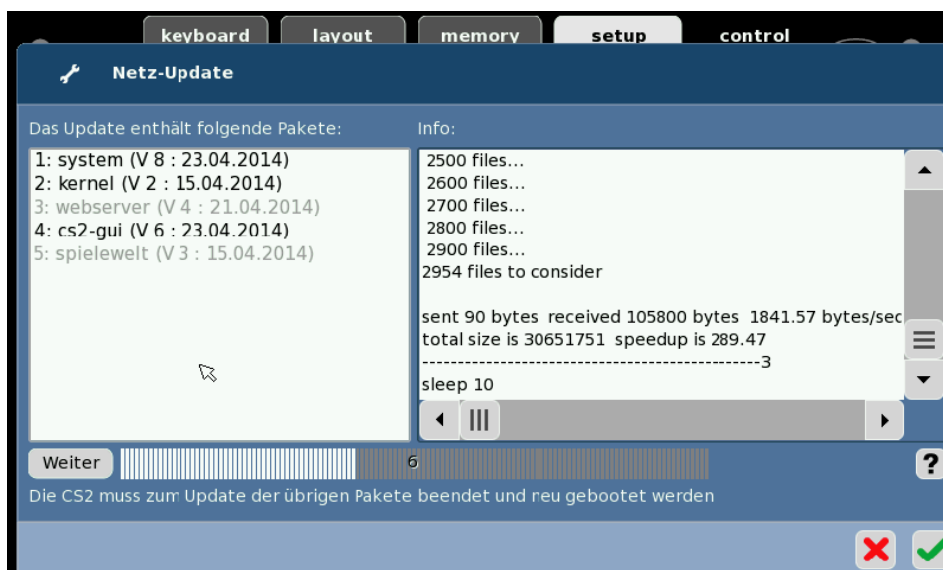
The new update process will already be applied in the next step. The menu item "Setup" has already changed as follows:



Under "Update" you can now select whether the update is to be done by means of the USB stick or by means of your data network. A new display will open up with both methods. This display will tell you when new update packets are available. You can also have additional information displayed for each packet.

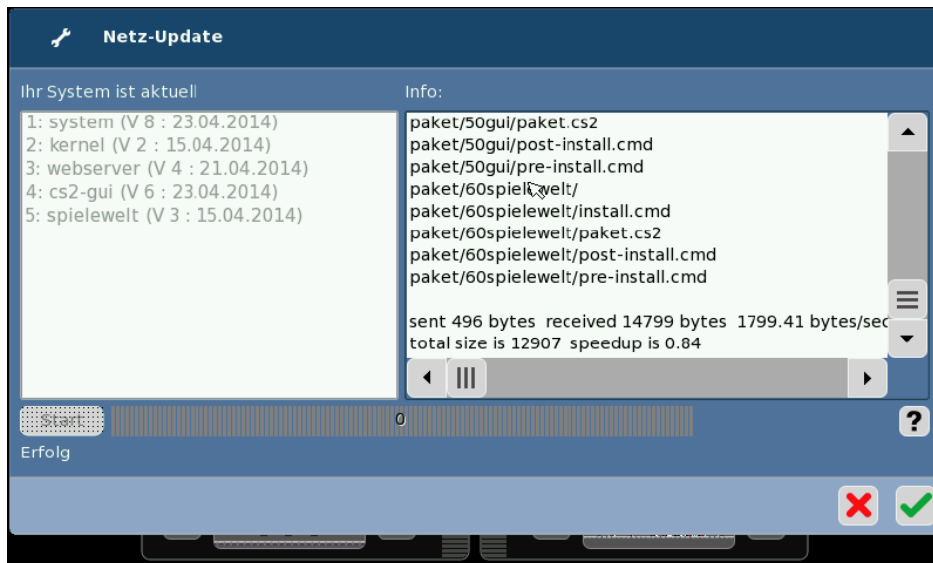


Clicking on the "Start" button will activate the update. Different information about the status of the update will appear during the update. It is not possible to transfer only partial packets.



**After a successful update, please click on the button "Further".** If you click on the "x" or the check mark, then the update has not been transferred completely. If you try to do the update again, the program will then continue from this point. You have to click on "Further" to have the changes take place and be available after restarting the Central Station.

A successful update is represented in two ways. The previous new update packets are represented in gray instead of black with one method. Also, "Your system is current" can be read in the upper status line.



We would be happy to answer questions about this procedure at our dealer hotline +49 7161 608 333.

Sincerely yours,  
Gebr. Märklin & Cie GmbH

Your Märklin Customer Service